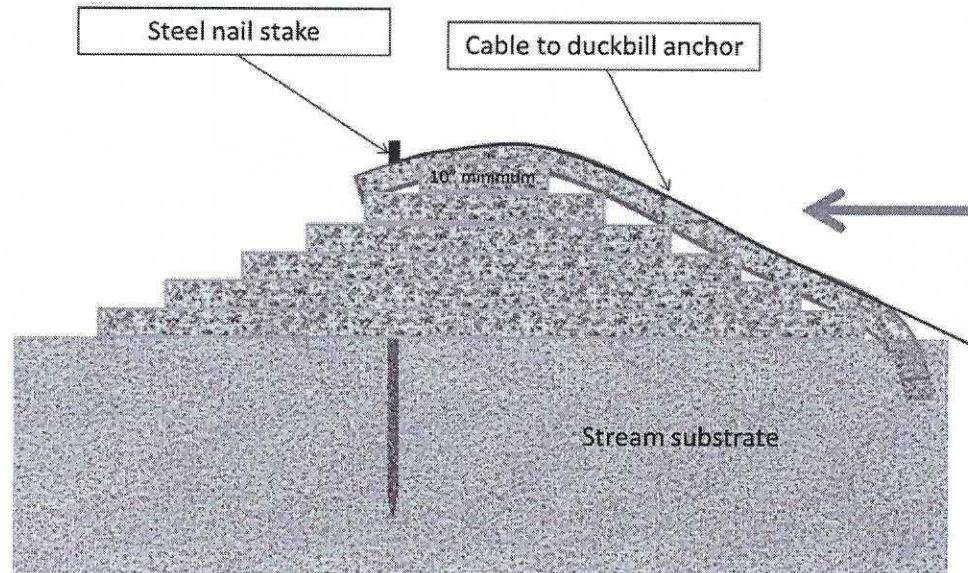




Willow Brook Stream Restoration Project

This project has been funded wholly or in part by the United States Environmental Protection Agency under assistance agreement 66.460 C9975500015 CWA Section 319(h) to the Ohio EPA, which funded Franklin Soil and Water Conservation District. The contents of this document do not necessarily reflect the views of the Environmental Protection Agency, nor does the EPA endorse trade names or recommend the use of commercial products mentioned in this document.



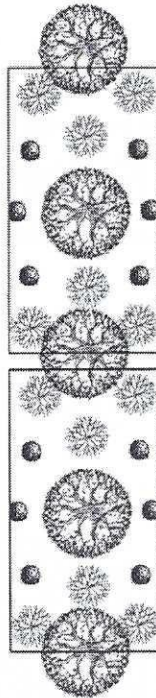
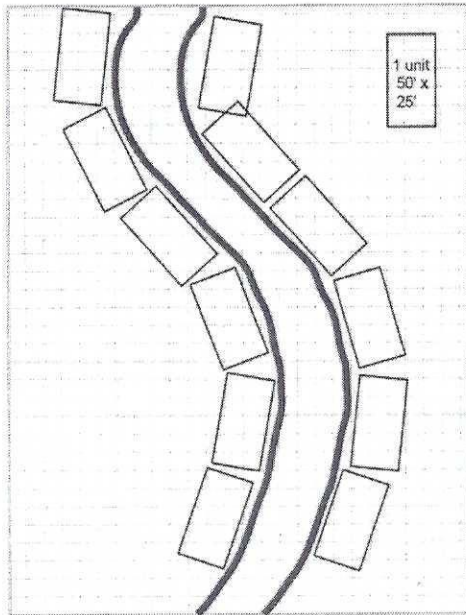
Insert Schematic



Approximate Insert Locations

Example:

This buffer will be 300' long and 25' deep, planted on both banks.

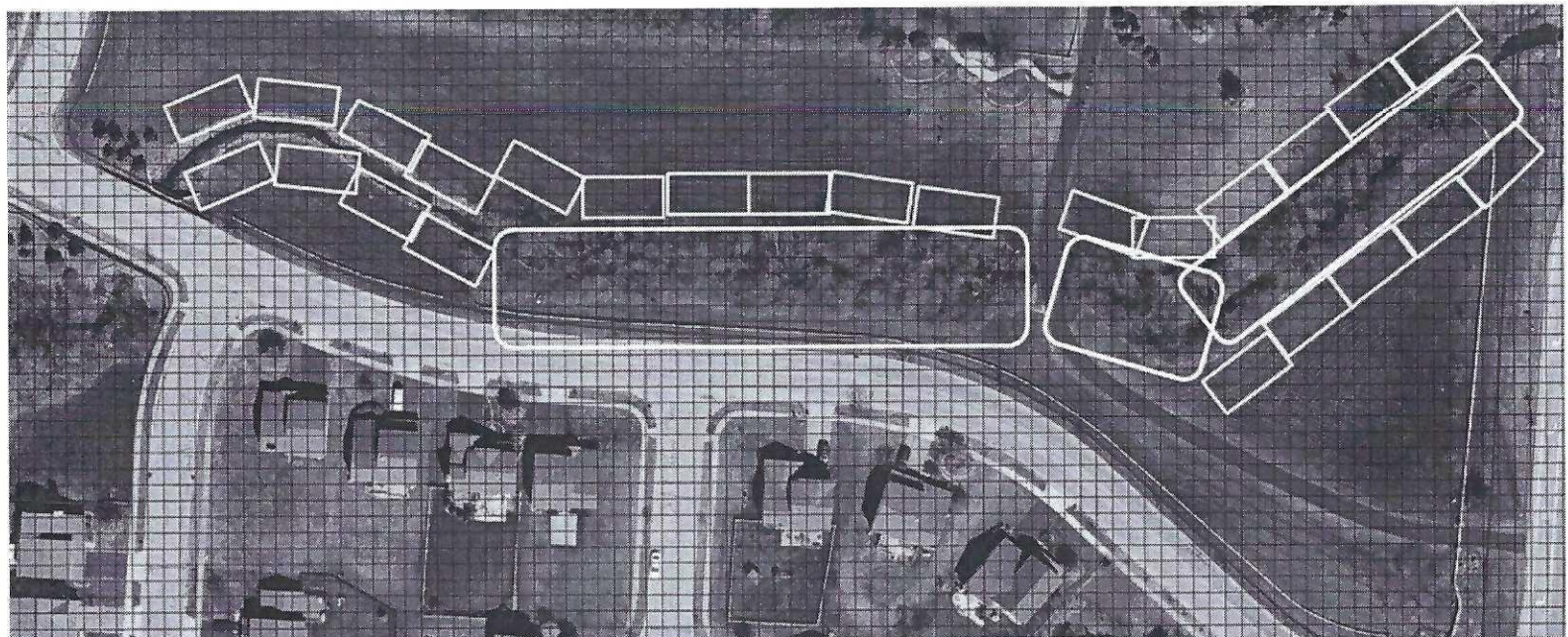


| List of potential trees and shrubs | |
|------------------------------------|---------------------------------|
| American beech | Cottonwood |
| American Cranberry | Dwarf river birch (Little King) |
| American hornbeam | Eastern redbud |
| Arrowwood Viburnum | Elderberry |
| Bald cypress | Hackberry |
| Beech | Hawthorn |
| Black cherry | Ninebark |
| Black Chokeberry | Ohio buckeye |
| Black gum | Prairifire crabapple |
| Black locust | Red Chokeberry |
| Black willow | Red osier dogwood |
| Blackhaw | River birch |
| Bur oak | Silky dogwood |
| Button bush | Spice bush |
| Catalpa | Spicebush |
| Chincapin oak | Swamp white oak |
| Chokecherry | Sycamore |
| Common hickory | Yellow Buckeye |

A 25' buffer is the minimum depth for a meaningful buffer.
 50' is better if you have the room.
 100' is the best, especially if your stream floods often.
 But... even a single line of trees and vegetation is better than nothing.

Buffer Schematic

(from: <https://www.cuyahogawcd.org/files/resources/woodsforwatersriparianbufferplantingguide.pdf> p. 8)



Areas for buffer planting

Areas for invasive removal

General Work Plan